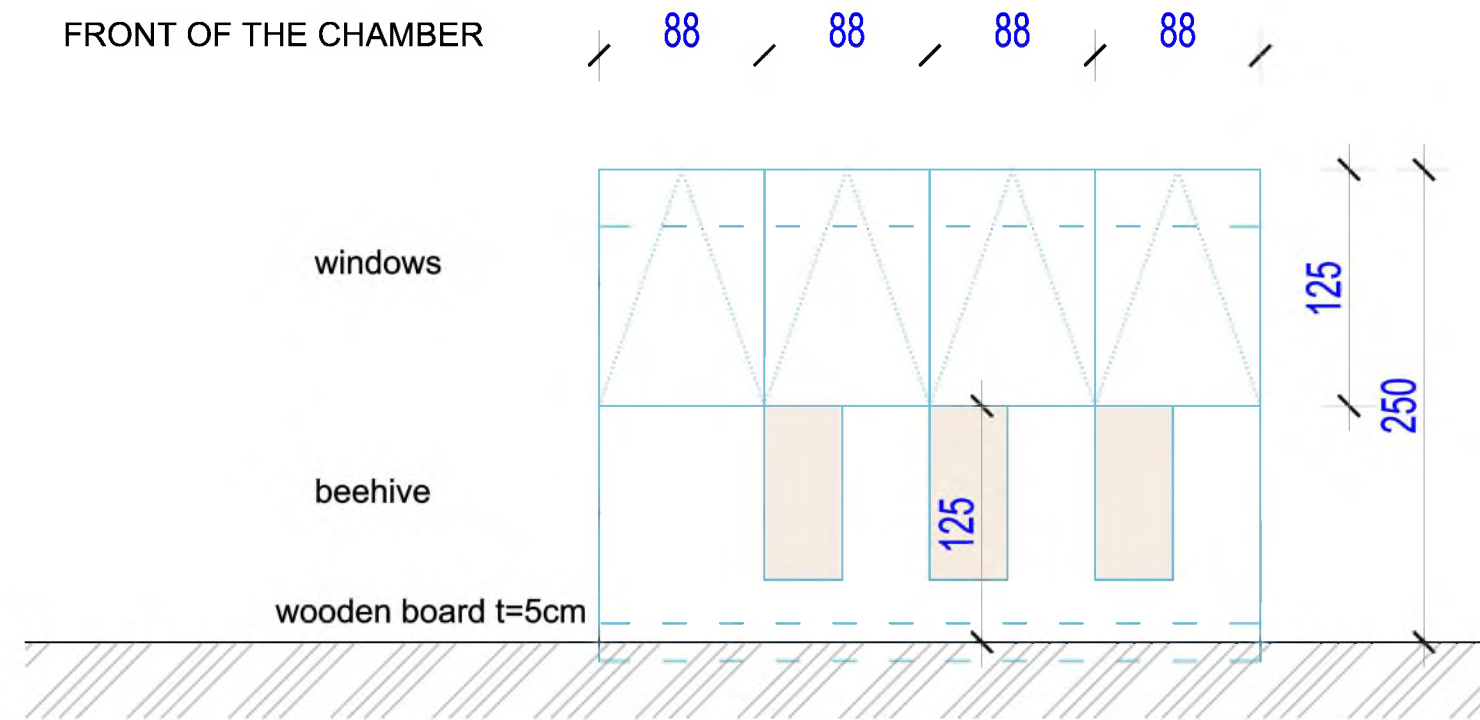
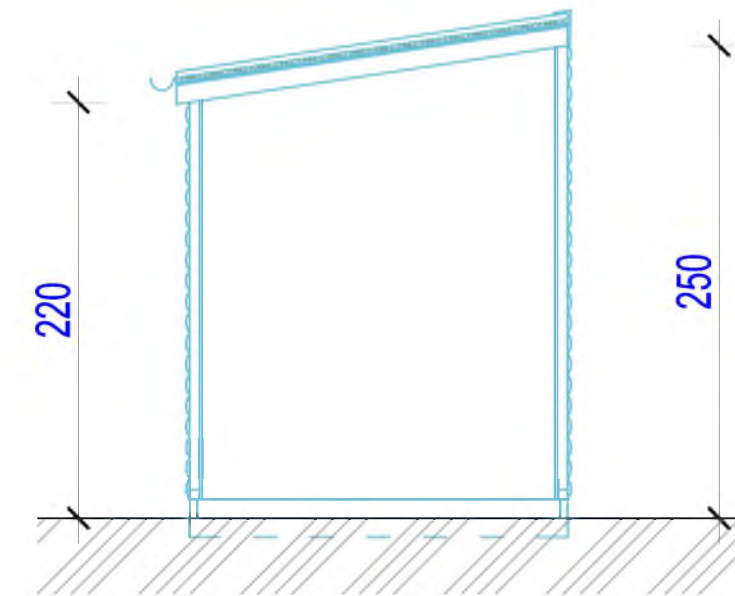


BANAT HONEY MULTIFUNCTIONAL UNIT

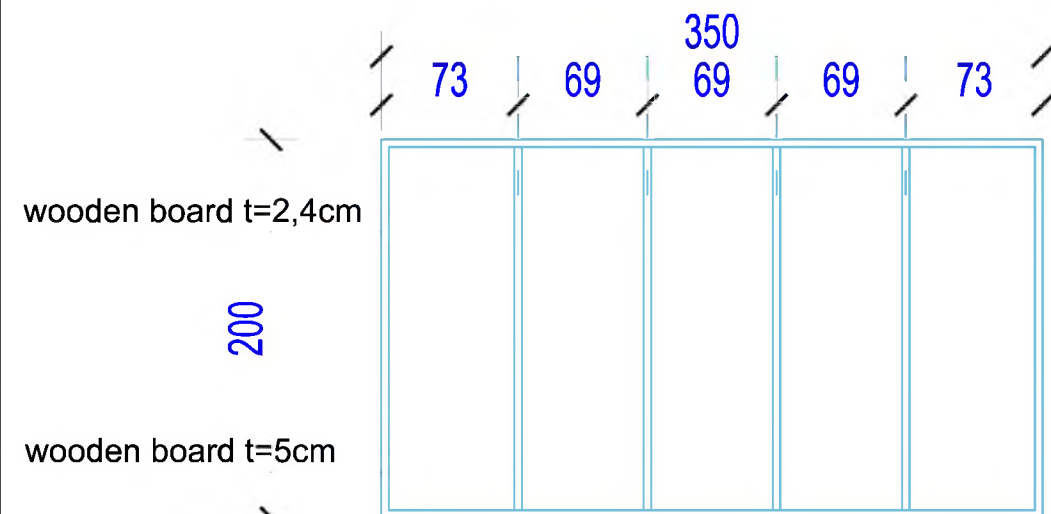
FRONT OF THE CHAMBER



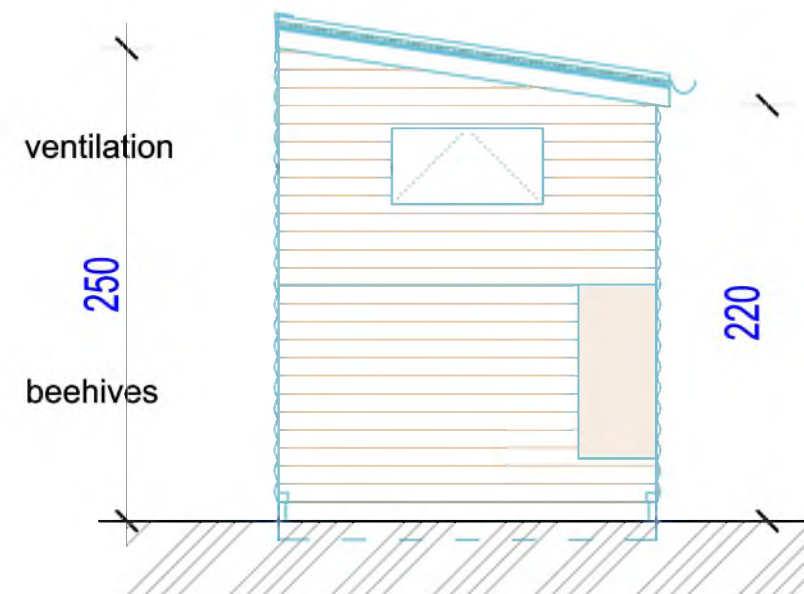
CROSS SECTION



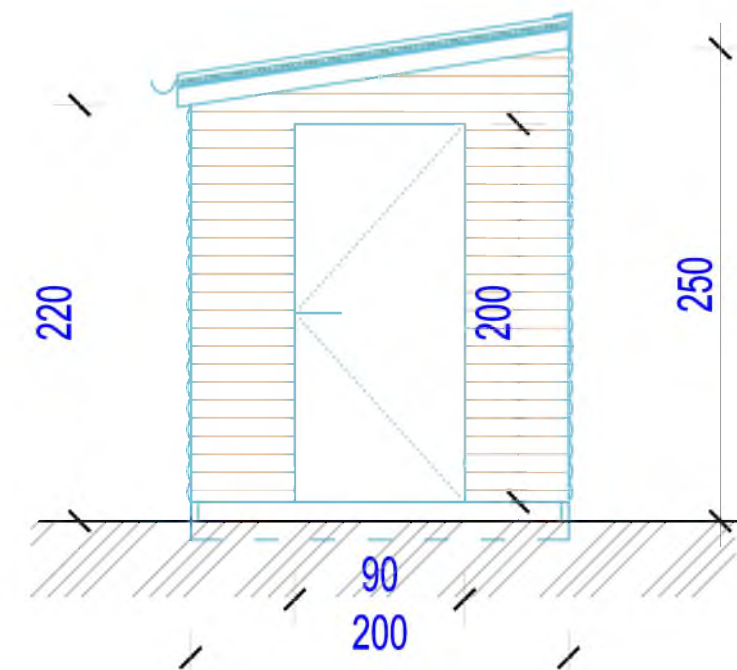
BASE



REAR VIEW



VIEW - ENTRANCE



DESCRIPTION :

Banat Honey Multifunctional Unit (API chamber) serves for inhalation with air passing trough the beehives. It is made of wood. The entire object consists of a bottom with a dimension of 350x200cm, and a lining made of beams made of cham wood, and OSB boards with stone wool insulation between them. The height of the object ranges from 220 to 250 cm. The final covering is half-forms made of wood. The pavilion also has a 5cm thick sandwich insulation made of styrofoam on the wall. The pavilion is equipped with 4 glass skylights and one luffer - a ventilation opening, as well as an entrance door. The roof is a one-pipe construction and is made of wooden beams 10x4 cm and other layers with thermal insulation. The final covering of the roof is a tile sheet. Drainage is done through a hanging gutter. Four hives are installed in the Api chamber, with 30 frames and a pollen remover, and it is equipped with inhalation masks. In the object there is a counter with shelves for the sale of bee products.